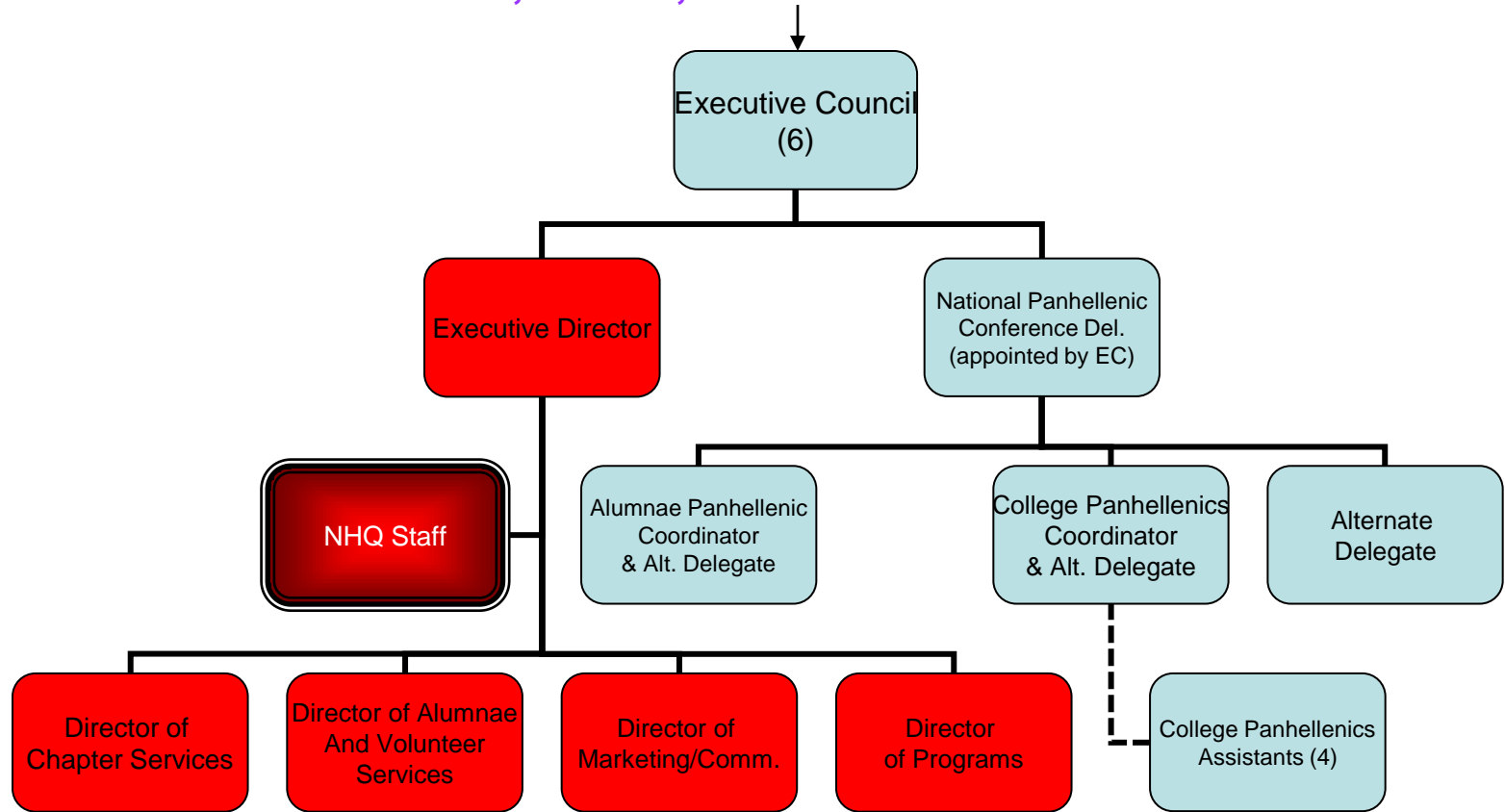
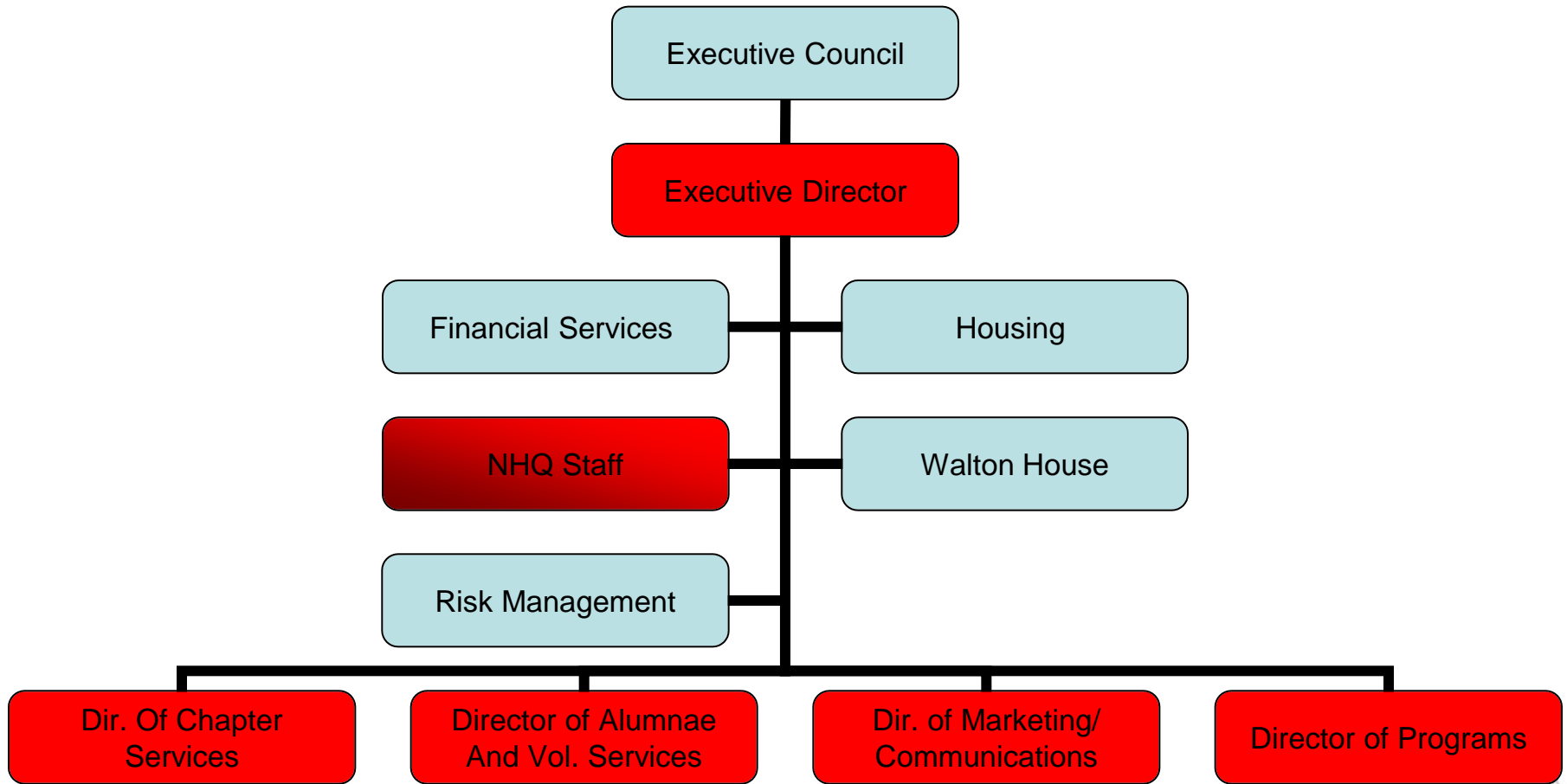


# Volunteer and Staff Organizational Chart

## Mission, Vision, Values and Ritual



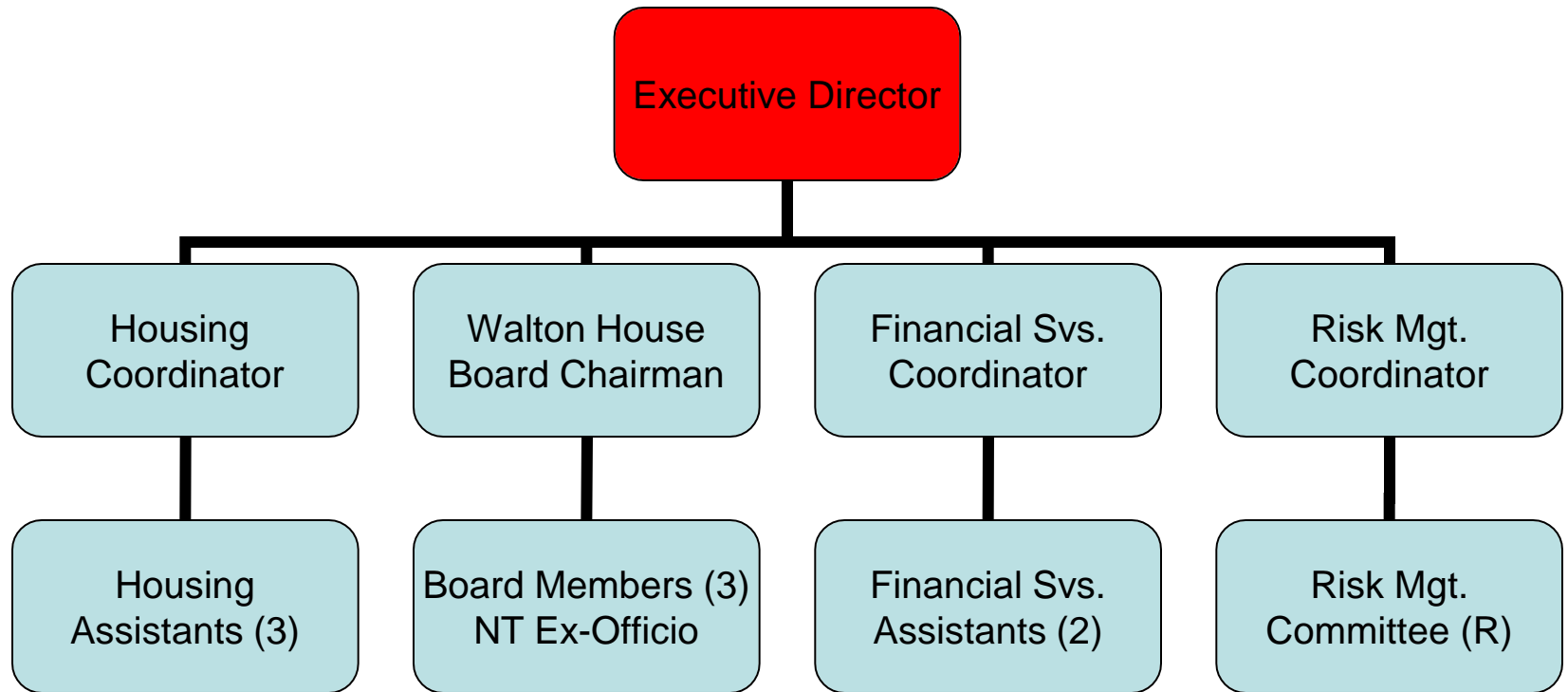
# Volunteer and Staff Organizational Chart – Executive Director



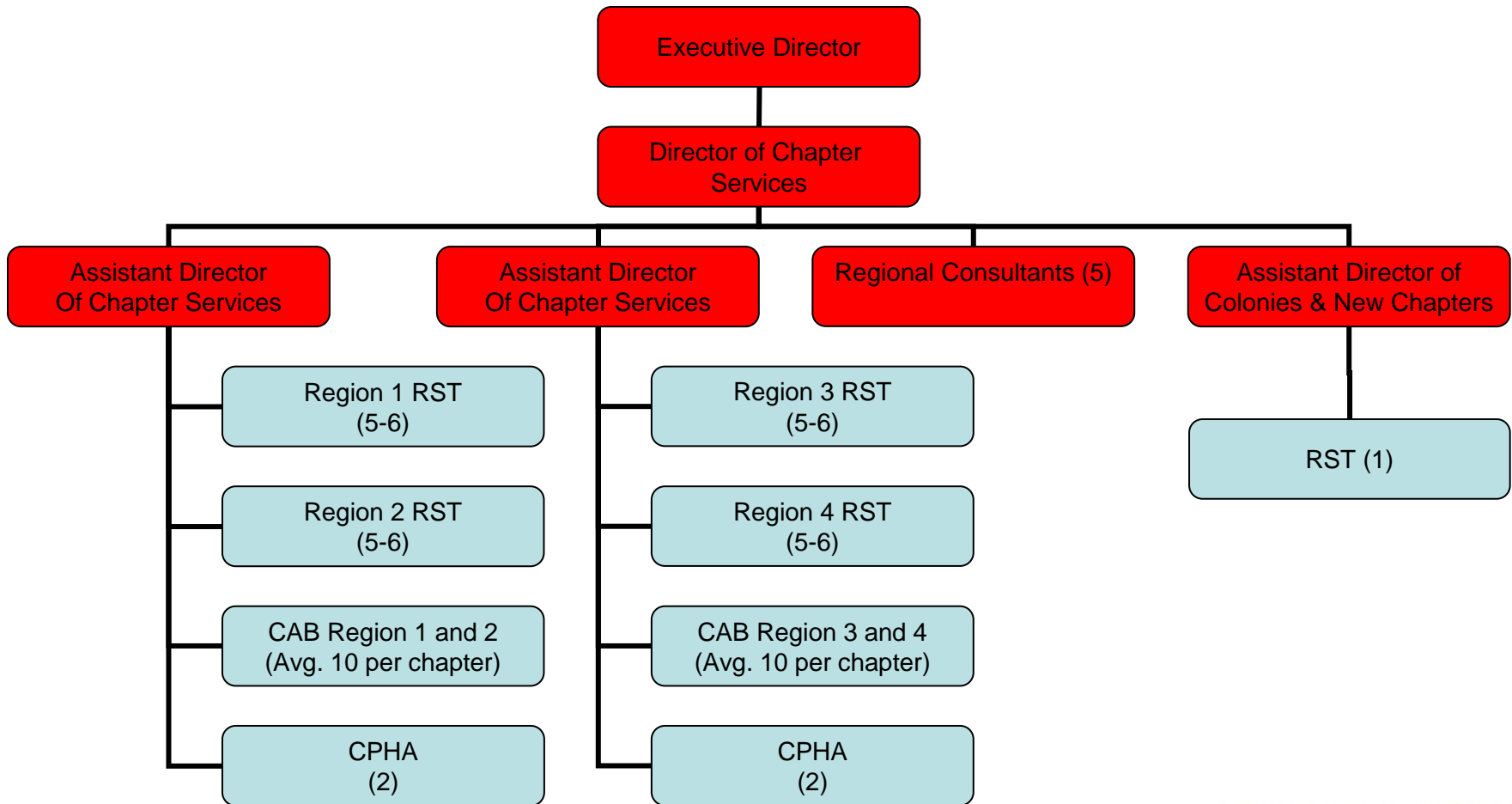
SIGMA SIGMA SIGMA  
*ever forward*



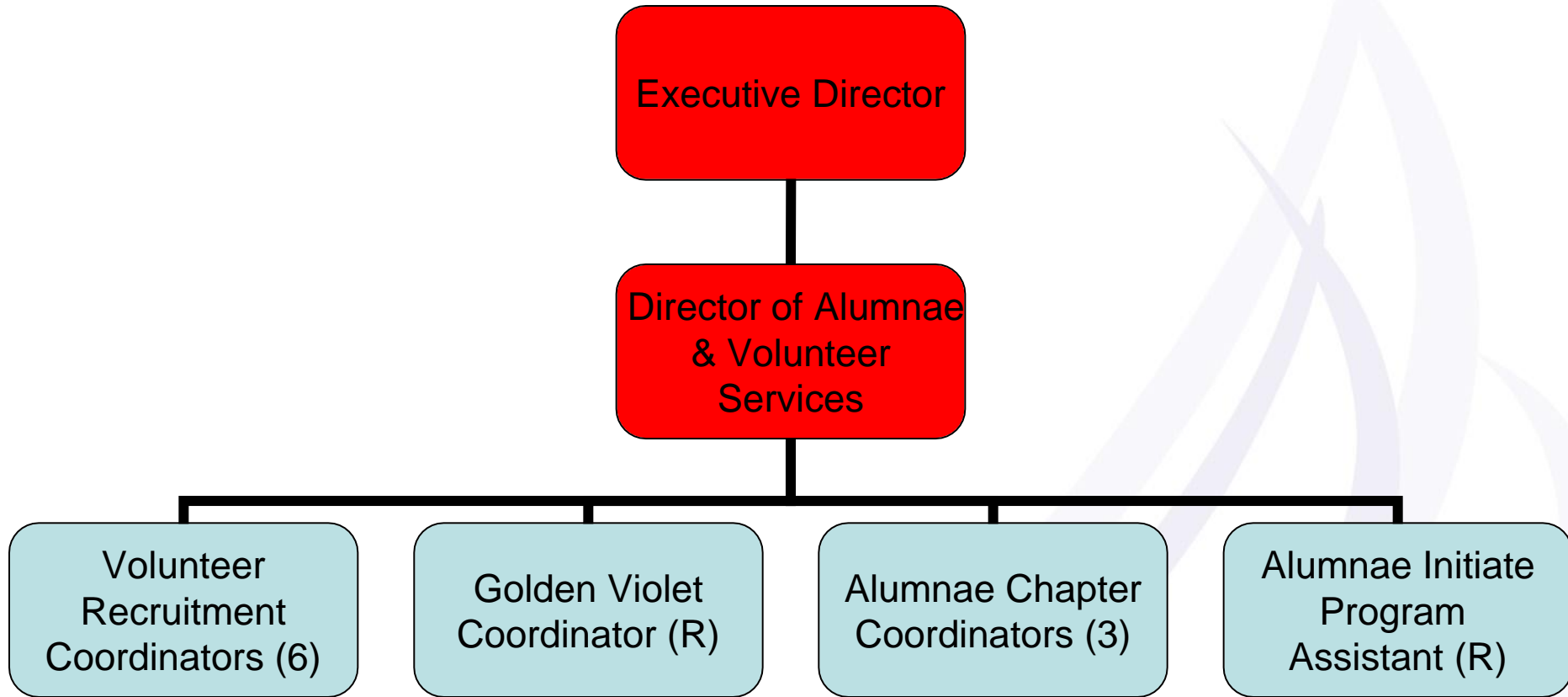
# Volunteer and Staff Organizational Chart – Executive Director Support Teams



# Volunteer and Staff Organizational Chart – Director Of Chapter Services



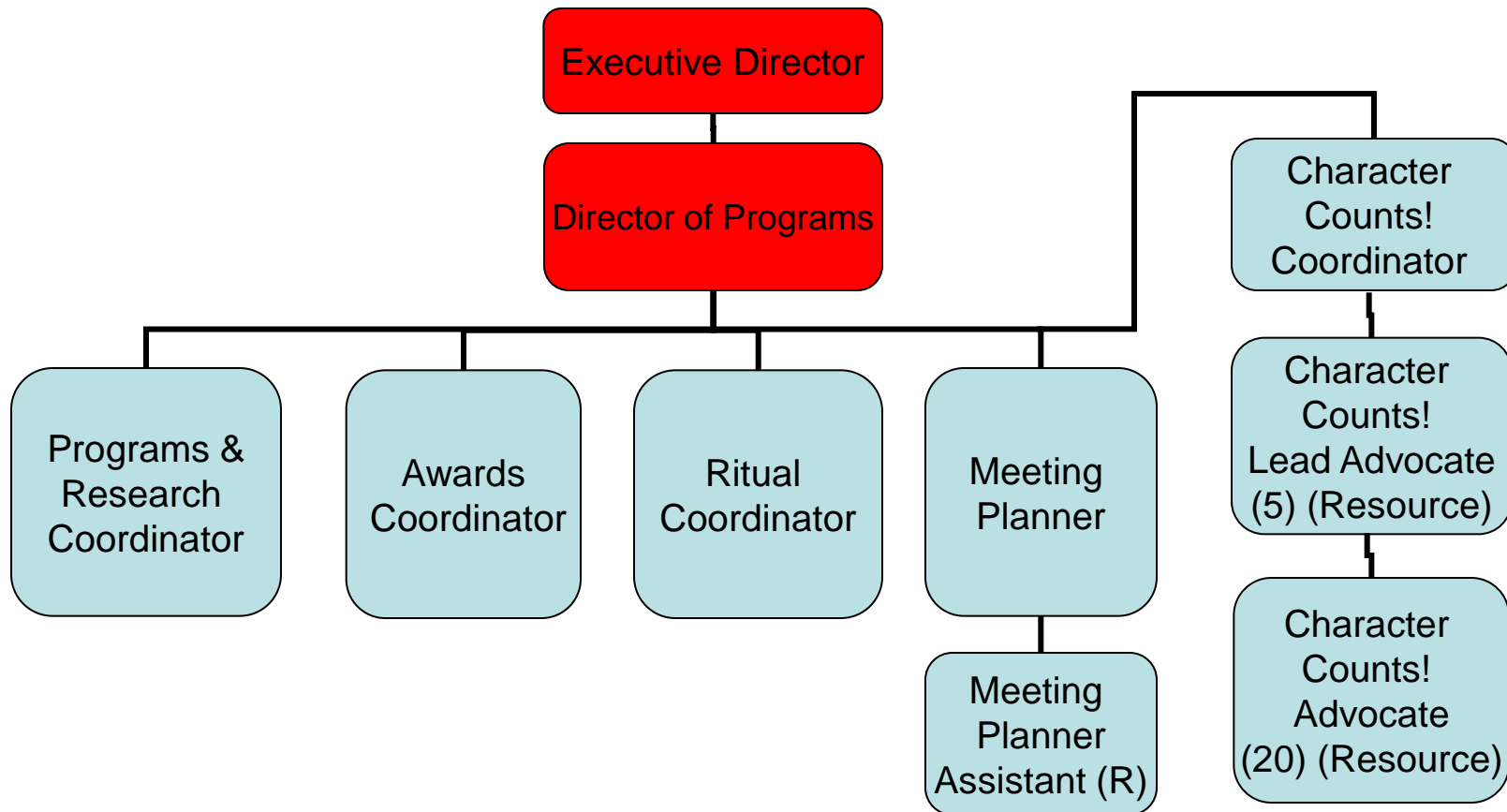
# Volunteer and Staff Organizational Chart – Dir. Of Alumnae & Volunteer Services



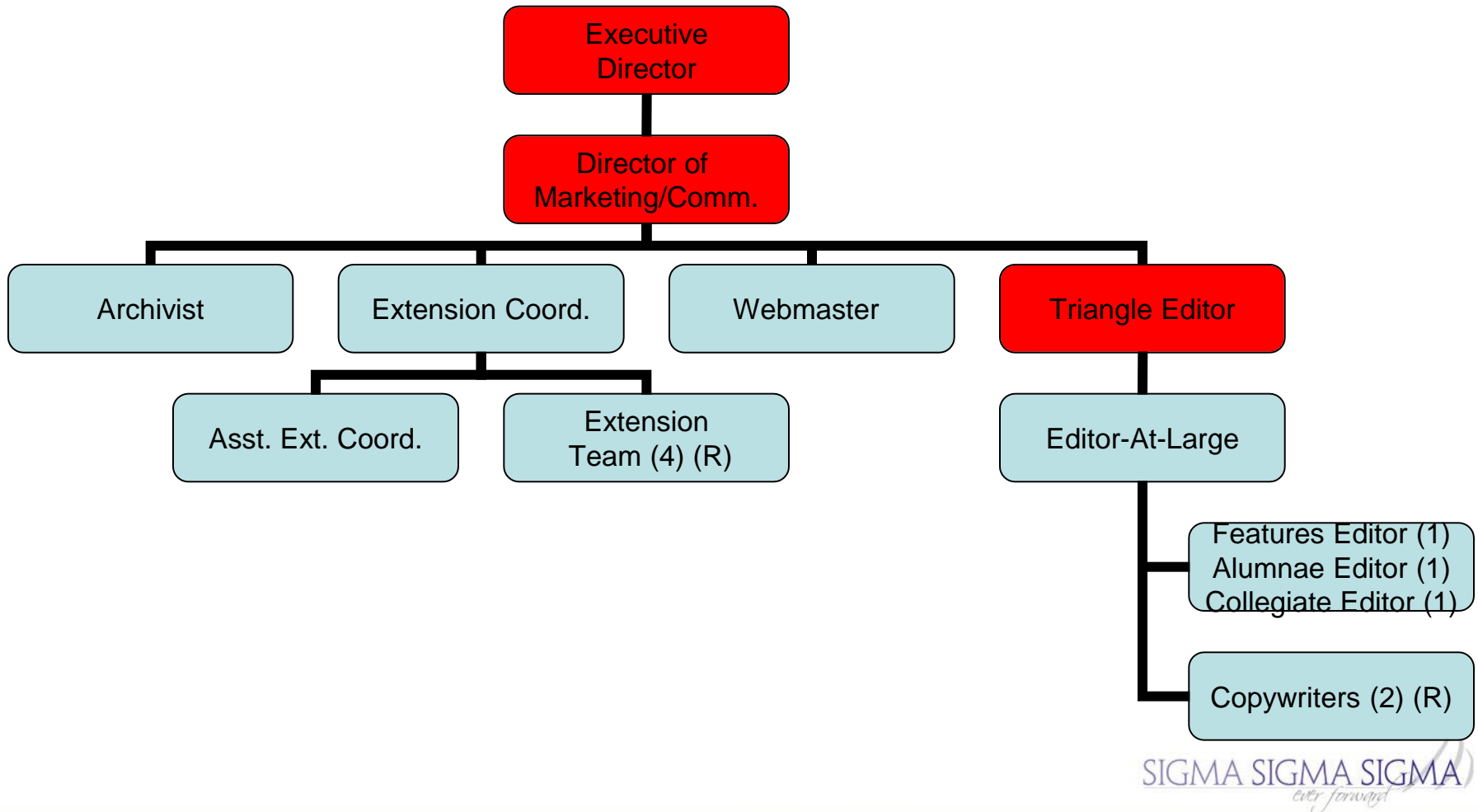
SIGMA SIGMA SIGMA  
*ever forward*



# Volunteer and Staff Organizational Chart – Director of Programs



# Volunteer and Staff Organizational Chart – Director of Marketing/Communications



SIGMA SIGMA SIGMA  
*ever forward*



# Volunteer and Staff Organizational Chart – Housing Department

Mission: The Housing Department will recruit, train, support and guide local House Corporation and Housing Liaison volunteers to deploy its assets prudently, to ensure the individual corporations comply with their appropriate filings, to promote the education and involvement of local alumnae in advising and assisting Tri Sigma chapters/colonies in their operations, and to provide a safe and healthy living environment and a positive experience.

**Executive Director**  
BB, EX

**Housing Coord.**  
AO, ΘΑ, ΘΓ

**Housing Assistant  
Region 1 and 2**  
(O/L stand alone)

AΦ, ΒΑ, ΒΕ, ΑΞ, ΑΠ,  
ΑΧ, ΒΠ, ΓΛ, ΕΔ, ΕΚ

**Housing Assistant  
Region 3 and 4**  
(O/L stand alone)

Π, Χ, Ψ, ΑΑ, ΑΒ, ΑΖ  
ΑΜ, ΓΒ, ΔΔ, ΔΠ, ΔΧ

**Housing Assistant  
All Other**  
Suites/Lodges/Row/Other

ΑΨ, ΑΥ, ΒΥ, ΒΞ, ΓΜ, ΔΒ  
ΔΥ, ΕΘ, ΕΨ, ΗΚ, ΗΛ, ΗΟ  
ΗΣ, ΗΥ, Ο, Α, Λ, Ν, ΒΘ, ΔΟ  
ΕΦ